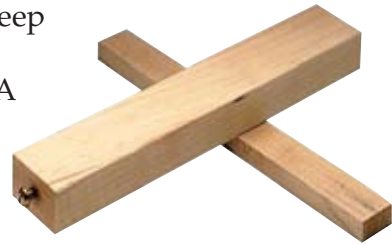


# 100+ Bonus Woodworking Tips

## Around the Shop

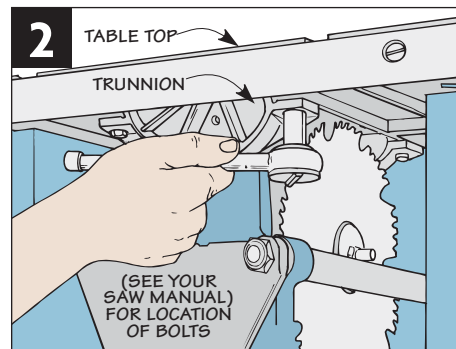
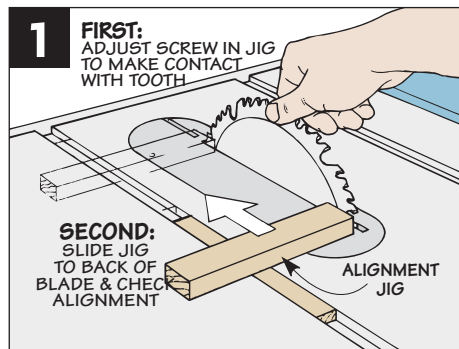
### Table Saw Blade Alignment

Just like a car, your table saw needs periodic adjustments to keep it performing at its best. One important adjustment you can make is to make sure the blade is parallel to the miter gauge. A quick way to do this is to use a simple shop-made, T-shaped jig with a brass screw, see photo.



Just place the jig in one of the miter gauge slots, near the front of the blade, see Figure 1. Then adjust the screw until it touches a tooth (mark this tooth). To check the alignment, simply slide the jig to the back of the blade and rotate the blade until the marked tooth faces the screw.

If the screw touches the blade, the blade is ok. If it doesn't touch (or binds up) loosen the bolts securing the trunnion to the saw table, as in Figure 2. Then make the necessary adjustments according to your owner's manual.



Woodsmith®

ShopNotes®